

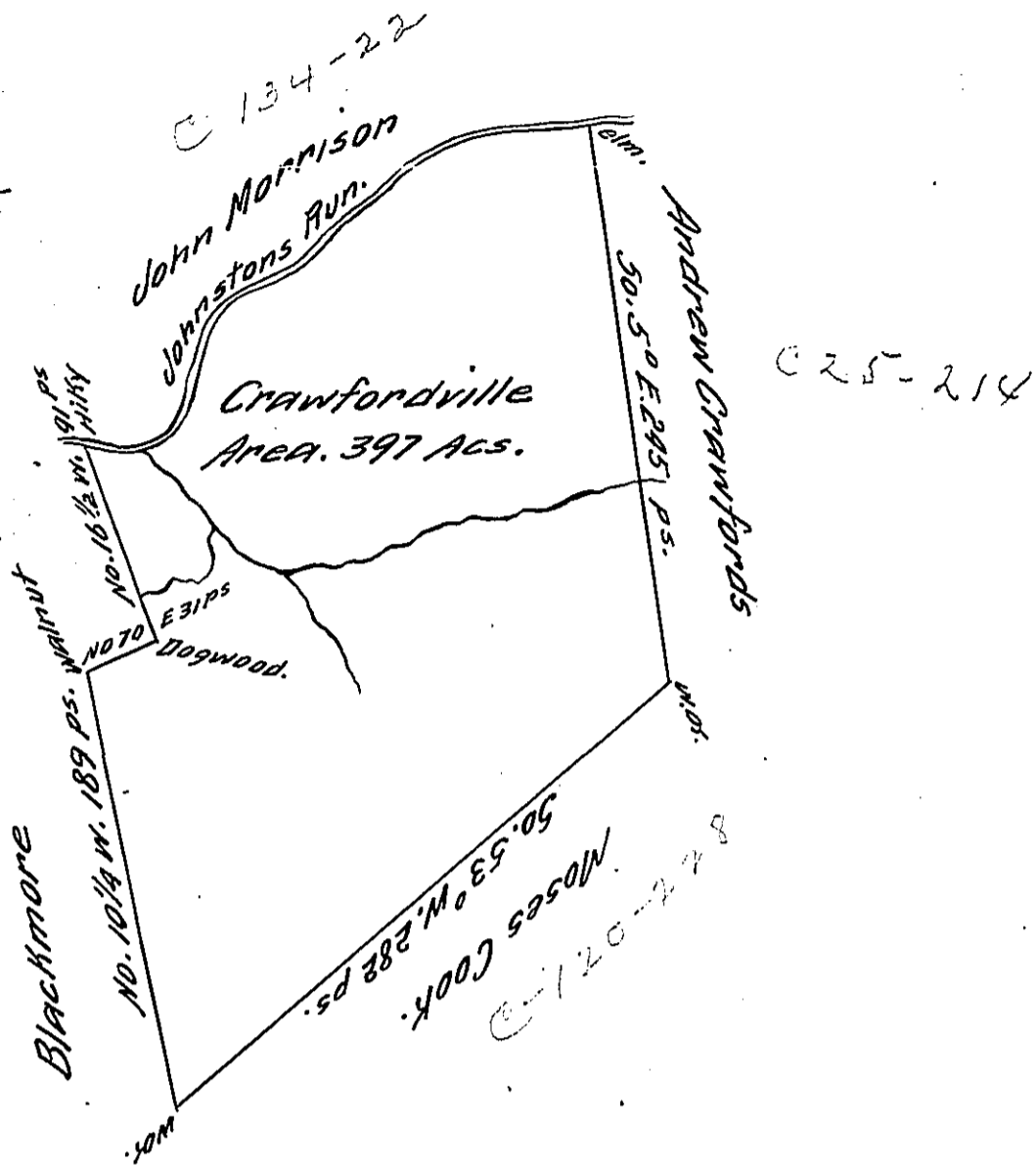
Courses up Johnstons Run
from ye Hickory.

- So. 80° E. 26 ps. an Elm.
- No. 40° E. 50 ps. a Cherry T.
- No. 20 E 38 ps. an Elm.
- No. 80 E. 26 ps. Ironwood
- No. 55 E. 100 ps a Willow.
- So. 88 1/2 E. 56 ps an Elm.

296 000.

C 38-144

C 23-31



A Draught of a Survey call'd Crawfordville lying on the Waters of Chartiers Ck. in Washington County contg 397 Ac:s with ye usual Allownce. executed Decr. 10th. 1785 in Pursuance of a Warrant in ye name of Josiah Crawford for 400 Acs. dated June 28th 1785.

Presley Nevill }
Matt. W. Fitchie } D. S. U. S.

John Lukens Esqr. }
Sur. Genl. }

IN TESTIMONY that the above is a copy of the original remaining on file in the Department of Internal Affairs of Pennsylvania, made conformably to an Act of Assembly approved the 16th day of February, 1833, I have hereunto set my Hand and caused the Seal of said Department to be affixed at Harrisburg, this twenty first day of February 1911

Henny Howell
Secretary of Internal Affairs.